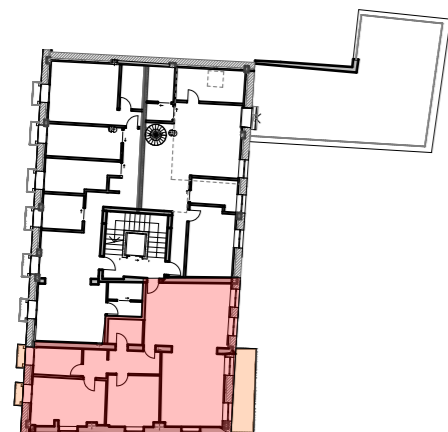


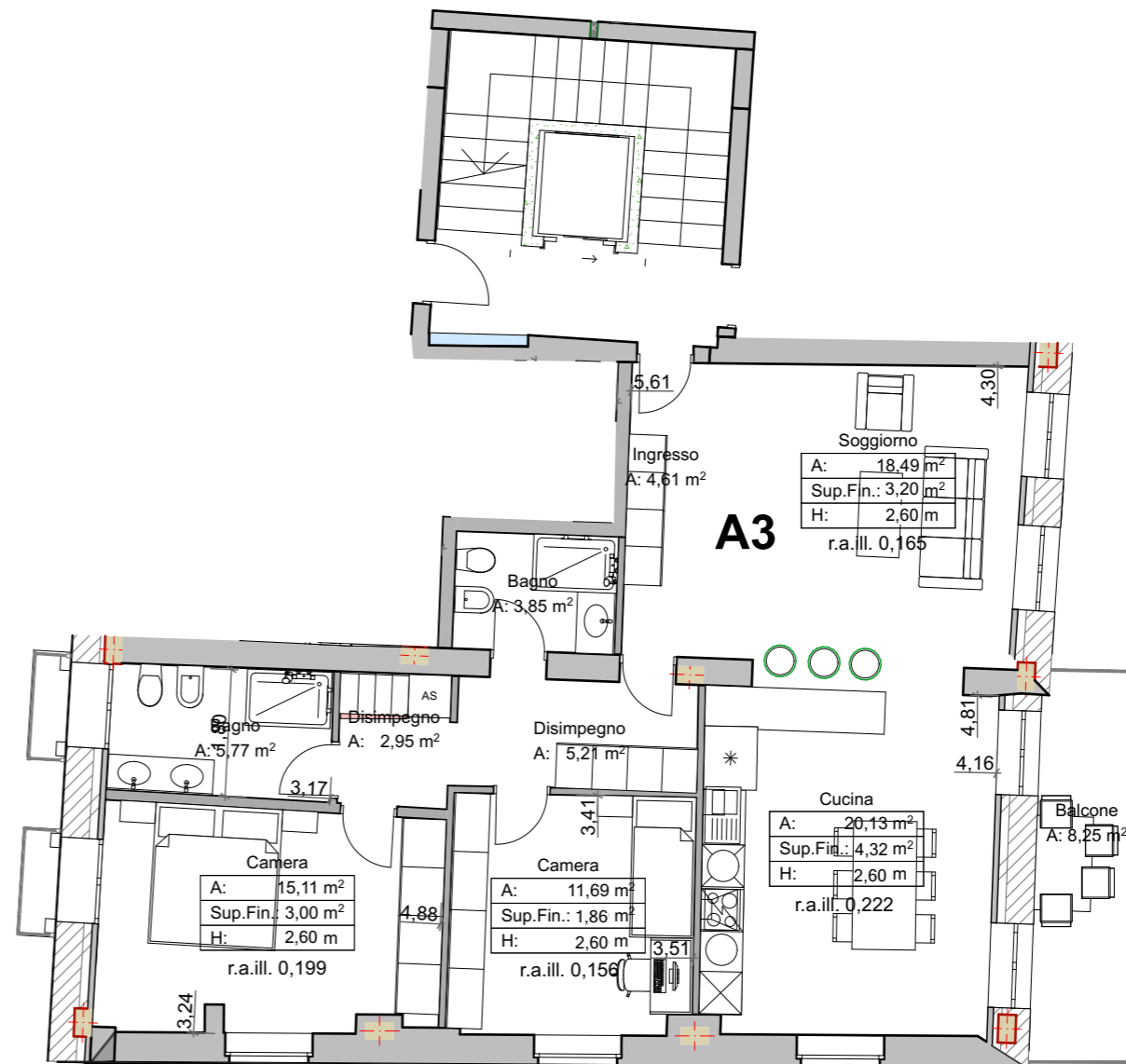
# APPARTAMENTO A03

Area= 111,71 mq  
 Balconi 50% = 4,92 mq  
 Parti comuni: 100% = 11,57 mq  
 Totale Sup. Commer. = 128,20 mq



Pianta Piano secondo 1:500

- A 03
- Terrazze



Pianta Piano secondo

1:100



Ortofoto

