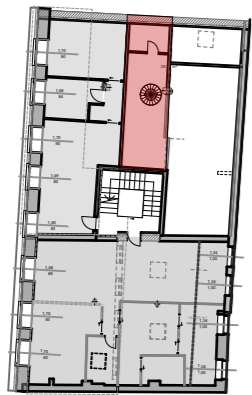


APPARTAMENTO A05

Area = 125,50 mq
 Sottotetto 70% = 20,00 mq
 Balconi/Terrazze 50% = 39,50 mq
 Parti comuni: 100% = 8,83 mq
 Totale Sup. Commer. = 193,83 mq

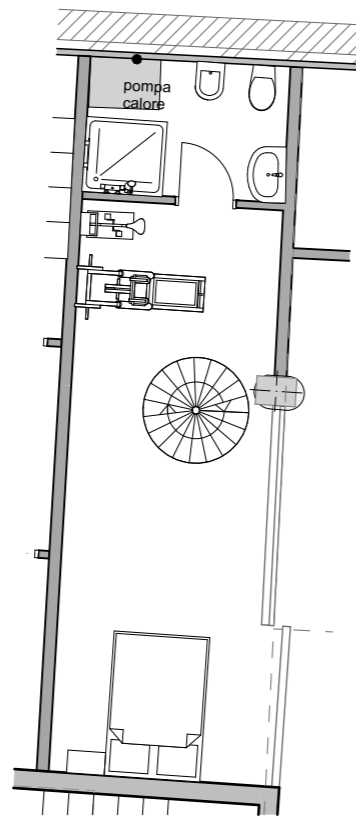


SECONDO PIANO 1:500



TERZO PIANO 1:500

A 05



Soppalco 1:100



Pianta Piano Secondo 1:100



Ortofoto

